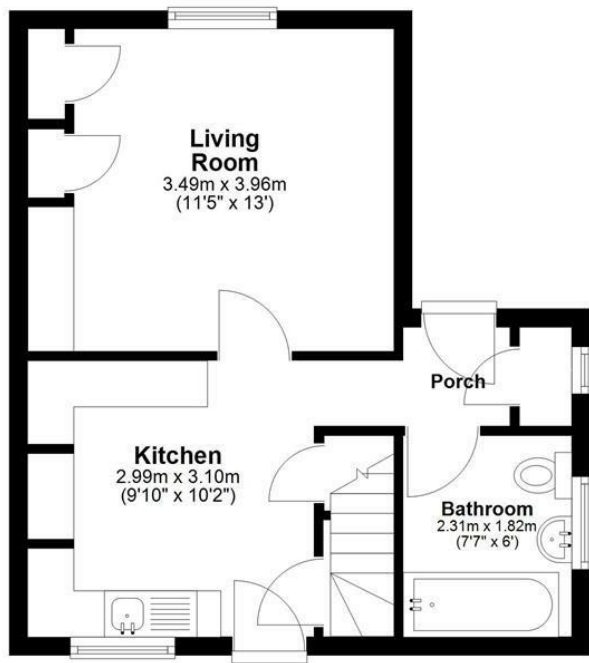
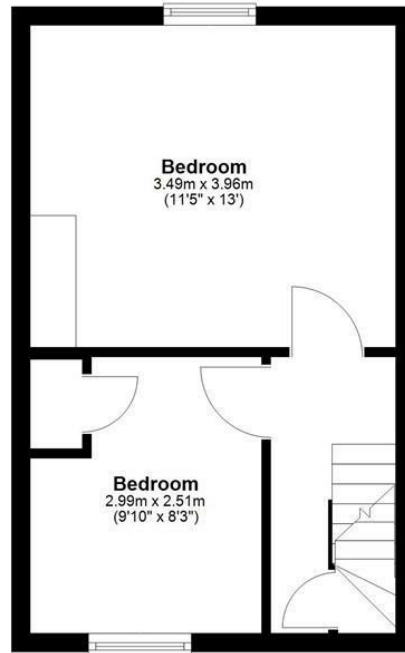


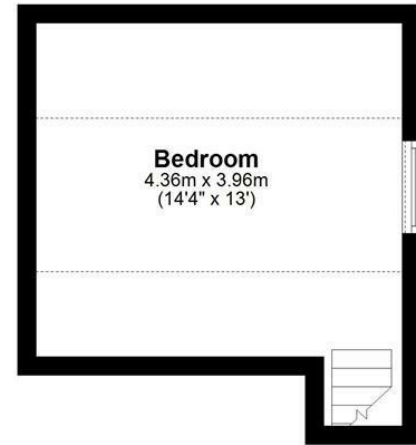
Ground Floor



First Floor



Second Floor



Total area: approx. 73.5 sq. metres (791.0 sq. feet)



01732 522 822
info@khp.me



Stangate Road
West Malling ME19 5JN
£1,800

Tenure:

Council tax band: C



Attractive 2 double bedroom and 3rd loft room, semi-detached home set in the heart of Birling village. Properties like this are rarely available. A viewing is a must to fully appreciate the lovely location and character of this home. The property has just been renovated to a lovely standard.

3 Bed semi detached, parking and small garden.
Newly refurbished throughout.
- NEW FLOOR TO BE PUT DOWN NEXT WEEK

Available ASAP
Pets Considered

